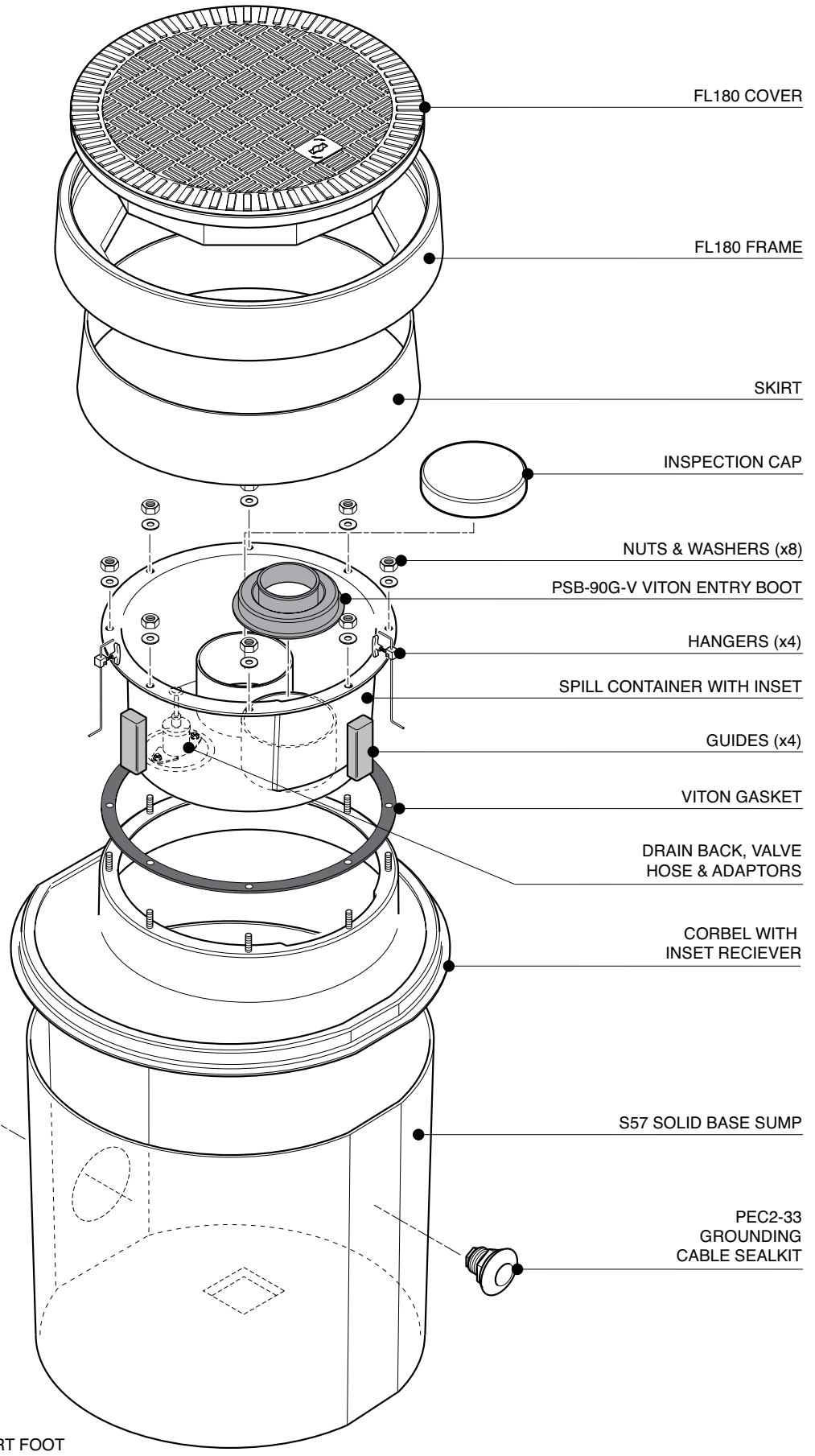


Secondary contained remote fill sump. 23" dia. x 25" deep solid base sump with a sealed secondary spill container and integrated drainback system. 18" dia flat sealed cover and frame. Includes PSB-90-PS 3 9/16" dia. spill tray fill riser sealkit and grounding cable sealkit.

For reference purposes only. This drawing is not a specification. Order against product code only. To enable continuous improvement of our products, the designs and specifications are subject to change without notice.

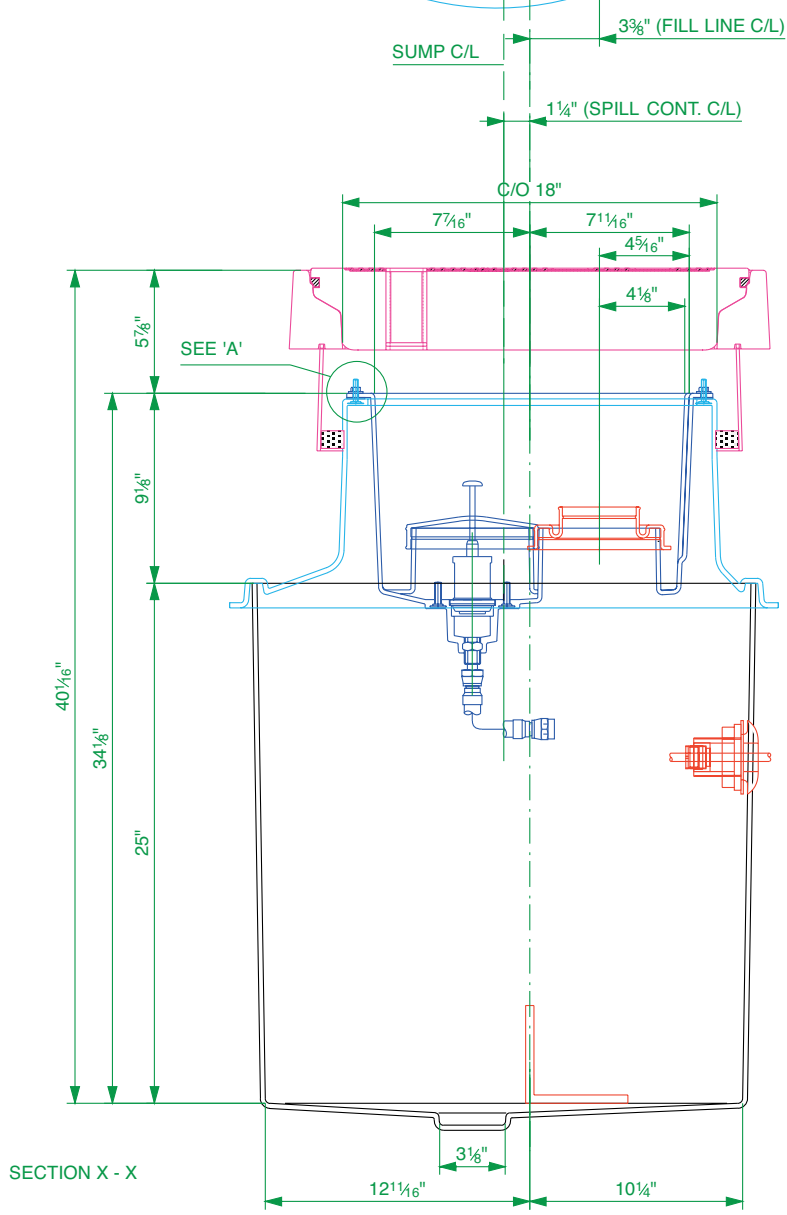
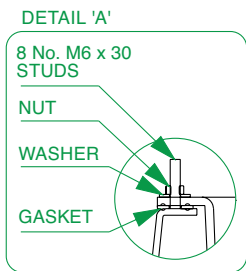
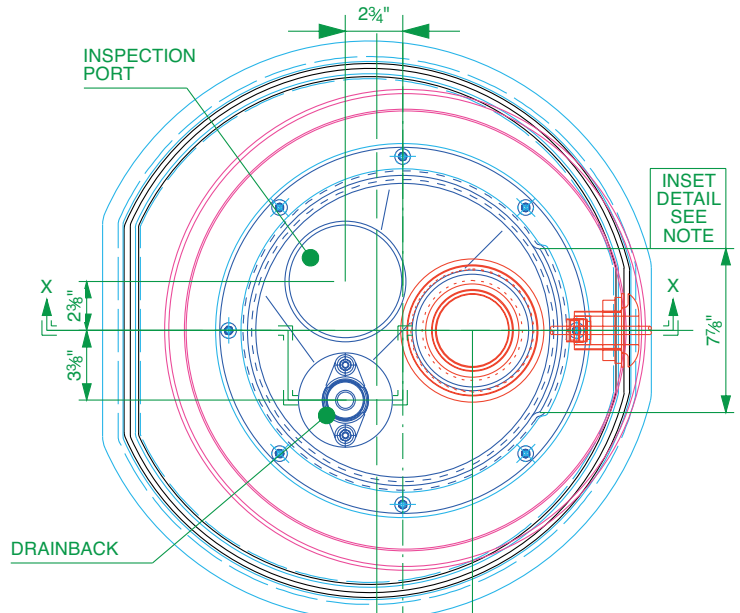
**FIBRELITE**   
PART OF OPW A DOVER COMPANY



Secondary contained remote fill sump. 23" dia. x 25" deep solid base sump with a sealed secondary spill container and integrated drainback system. 18" dia flat sealed cover and frame. Includes PSB-90-PS 3 9/16" dia. spill tray fill riser sealkit and grounding cable sealkit.

For reference purposes only. This drawing is not a specification. Order against product code only. To enable continuous improvement of our products, the designs and specifications are subject to change without notice.

**FIBRELITE**   
PART OF OPW A DOVER COMPANY



Spill Containment Capacity = 5.8 US Gal.

SECTION X - X

Secondary contained remote fill sump. 23" dia. x 25" deep solid base sump with a sealed secondary spill container and integrated drainback system. 18" dia flat sealed cover and frame. Includes PSB-90-PS 3 9/16" dia. spill tray fill riser sealkit and grounding cable sealkit.

For reference purposes only. This drawing is not a specification. Order against product code only. To enable continuous improvement of our products, the designs and specifications are subject to change without notice.

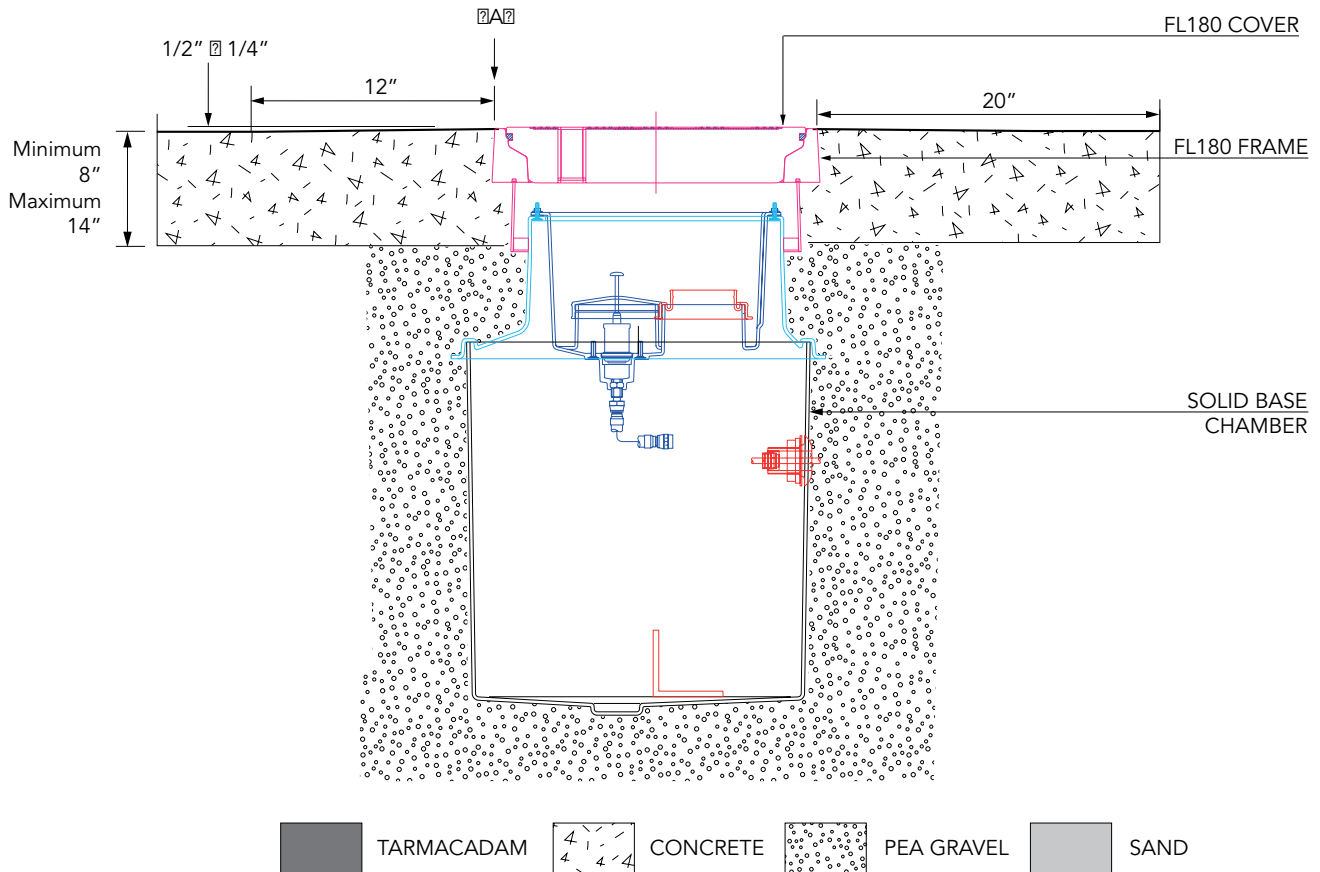




**VERY IMPORTANT**  
 OUTER EDGE OF FRAME SET 1/2" ± 1/4"  
 ABOVE GENERAL FORECAST AREA WITH  
 CONCRETE RAMPED AT 1:1 OVER 12"

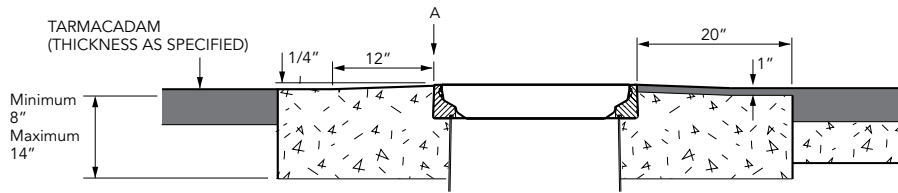
**TYPICAL INSTALLATION**

**CONCRETE**

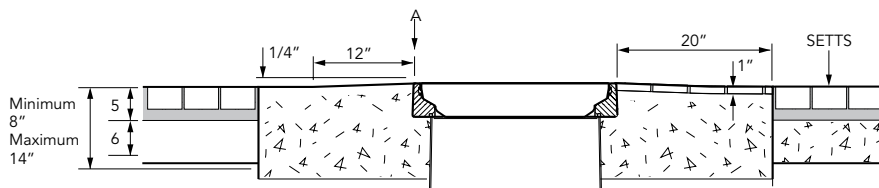


**ALTERNATIVE INSTALLATION ADVICE**

**TARMACADAM**



**SETTS**



Secondary contained remote fill sump. 23" dia. x 25" deep solid base sump with a sealed secondary spill container and integrated drainback system. 18" dia flat sealed cover and frame. Includes PSB-90-PS 3 9/16" dia. spill tray fill riser sealkit and grounding cable sealkit.

For reference purposes only. This drawing is not a specification. Order against product code only. To enable continuous improvement of our products, the designs and specifications are subject to change without notice.

