

Leading Engine Manufacturing Facility



Fibrelite Covers Solve Cable Deterioration Issues at Leading Engine Manufacturing Facility



Leading Engine Manufacturer, UK

Project Overview

Manufacturing plants require heavy-duty power cabling into the facilities to power their large amounts of machinery, especially in a highly technical industry like engine manufacture. The cables must be protected, yet easily accessible for inspection. However, existing heavy metal access covers at this facility were allowing water ingress which was affecting the cables.

Problem

Previously installed leaking steel covers were allowing water ingress, which over time was deteriorating the power cable sheathing. Once deteriorated past a certain point, the cables would have to be replaced to avoid exposing the live wires underneath, causing delays in the facility.

The steel trench covers themselves were also rusting, and very heavy to remove: a time-consuming procedure. The covers were located in an emergency escape route, so it was essential that replacement was conducted as quickly as possible.



Previously installed steel covers over electrical inspection pit



Water ingress due to unsealed covers, causing cable deterioration

Solution

Fibrelite designed, manufactured and installed a retrofit sealed system, setting an aluminium frame into the existing steel with an epoxy grouting system, preventing the need for breaking out and reinstating the concrete margin. The installation was completed in less than two days, so the walkway was closed for a small amount of time, causing minimal disruptions.

The covers were equipped with a bolt restraining system, so they could be secured, preventing unauthorised access and forming a watertight seal, preventing water ingress.



Retrofitted sealed Fibrelite covers installed



Fibrelite covers are resistant to corrosion and adverse weather conditions

Results

Fibrelite provided a retrofit watertight solution that was installed in less than two days that will eliminate maintenance issues associated with the previous cover arrangement. Fibrelite covers have an inherent resistance to corrosion and adverse weather conditions; meaning they will continue to perform year after year.

All Fibrelite covers are designed to be manually removed/replaced by either one or two people using the Fibrelite designed lifting handle(s) even at F900 (90 tonne) load rating, meaning that 2 people can now quickly, easily and safely maintain and monitor the power cables.



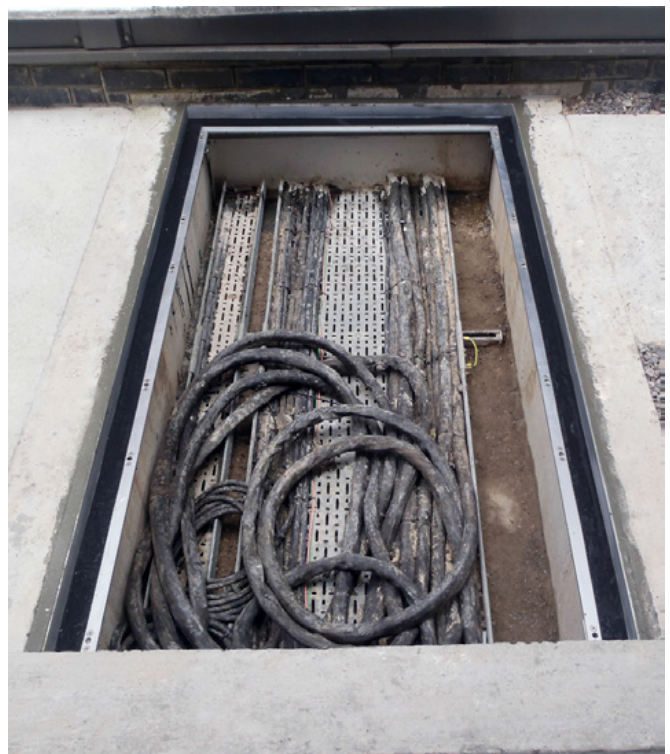
Sealed Fibrelite covers prevent water ingress



Covers quickly and easily removed by 2 people



Secured/restrained covers, preventing unauthorised access



Aluminium frame set into existing steel frame with epoxy grout

For more information on Fibrelite's product range please contact us:

UK Office:

Tel: + 44 (0) 1756 799 773

Email: covers@fibrelite.com

US Office:

Tel: + 1 919 209 2404

Email: covers@fibrelite.com

Malaysia Office (Asia Pacific):

Tel: + 44 (0) 1756 799 773

Email: covers@fibrelite.com