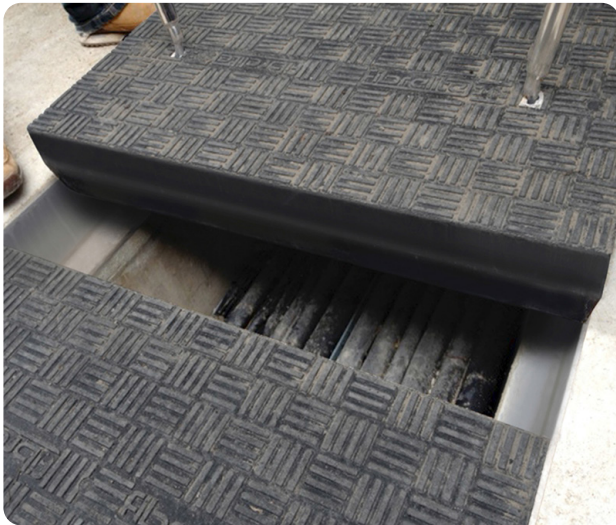


Fibrelite's Trench Covers Specified for a Brand New Restaurant Opening at a UK Zoo

Fibrelite's heavy duty composite trench covers have been specified for expansion work at a UK Zoo. The newly installed D400 trench panels are lightweight while maintaining the all-important strength properties of a 40 tonne load rated cover.

The trench covers provide easy and safe access to the ducting below and are regularly driven over by heavy goods vehicles. Designed as a 'fit and forget' product, the maintenance free Fibrelite trench panel is perfect to cover large areas that require frequent or occasional access.



For ease of installation and to provide a better seating face, a specially designed aluminium frame can be provided

The Versatile Trench Cover

With ranging widths, depths and lengths available together with the option of coloured covers and logos Fibrelite trench covers are extremely versatile. All covers are BS EN 124 load rated, from A15 (1.5 tonne, pedestrian traffic) to E600 (60 tonne). Suitable for an extremely broad range of applications including water treatment plants, stadia, hospitals, airports, ports, dockyards, retail and industrial developments.

Fibrelite can provide to any requirement you may have, supplying the truly versatile trench cover



Fibrelite's trench covers available in various depths, widths and sizes

Summary of Composite Benefits Versus Steel and Concrete

- Improved health and safety, safe manual handling
- Improved efficiency and productivity
- Airtight and watertight
- Corrosion resistant
- Resistant to aggressive chemicals
- No resale value to the scrap market so will not be stolen
- Non-metallic and will not spark
- Composite is lightweight, strong and unlike concrete will not crumble or crack



Fibrelite's ergonomically designed lifting handle make for easy and safe removal and entry to the ducting below

For more information on Fibrelite's product range please contact us:

UK Office:
Tel: + 44 (0) 1756 799 773
Email: covers@fibrelite.com

US Office:
Tel: + 1 919 209 2404
Email: covers@fibrelite.com

Malaysia Office (Asia Pacific):
Tel: + 44 (0) 1756 799 773
Email: covers@fibrelite.com